

MONTAGUE PLACE

GEORGE STREET

CAMBRIDGE



## ENJOY THE CHARMS OF GEORGE STREET...

Tucked away in one of Cambridge's most vibrant sought-after areas, George Street welcomes a collection of four brand new properties. Each stunning and individual in its own right, the Victorian style new-build homes offer exquisite city living with a difference.

Located just off Chesterton Road and Milton Road, George Street is a desirable residential street ideal for those looking for proximity to the City Centre. Residents are drawn to an atmospheric location offering an array of independent artisans and eateries including fine dining Restaurant Twenty-Two, Stir coffee shop and bakery, Barkers bakery, two local Co-operatives and a local bar and bottle shop; Thirsty - all moments away.

A short stroll via a delightful route over the River Cam takes you to the Market Square,



# PLOT TWO

GROUND FLOOR

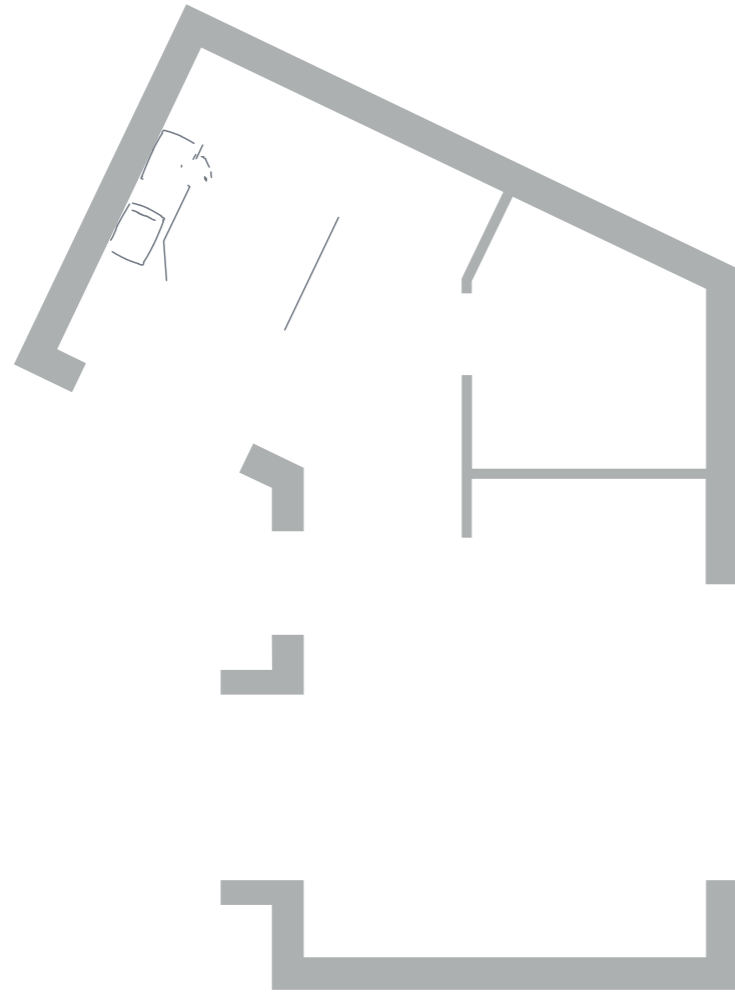
R

SECOND FLOOR



# PLOT FOUR - STUDIO

# SPECIFICATION





---

[www.rah.co.uk](http://www.rah.co.uk)

### CAMBRIDGE OFFICE

Dukes Court, 54-64 Newmarket Road,  
Cambridge CB5 8DZ

### GT SHELFORD OFFICE

30 Woollards Lane, Great Shelford,  
Cambridge CB22 5LZ

01223 800860 | [newhomes@rah.co.uk](mailto:newhomes@rah.co.uk)

The information and computer generated images contained in this brochure are for general guidance only and are not to be treated as statements of fact. Fittings, fixtures and standards of finish shown in photographs are not necessarily those to be included in the sale of a particular house. The properties will be sold only on the terms of any contract for sale issued through our solicitors. This brochure will not form any part of that contract. As part of our policy of continuous development Blues Property reserve the right to make alterations, omissions or additions to the development without notice. Journey times and bus information are indicative and subject to change.